

### 3.8 Worldwide interest in Tin Can Mail

Two 1937 "Markle" cartoon covers, perhaps personally produced for Walter Quensell

This cover is addressed by Walter Quensell to Mr. Gibson, Chief Officer S.S. Manganui-at-Sea. The stamps are cancelled with a Niuafou'ou postmark for 6th September 1937.



Reference 2

This cover is also addressed by Walter Quensell to his son August in New Zealand. Although there is again a TIN CAN MAIL OFFICE NIUAFO'OU TONGA circular cachet dated 6th September 1937, the stamps were cancelled with an Auckland N.Z. Loose Letter hand stamp dated 13th September 1937.



Reference 2

Only one other "Markle" cover is known to the author. This was addressed by Walter Quensell to the Cruise Manager S.S. Mauganui and is also dated 6th September 1937. Research thus far has not identified the author of these covers and is ongoing.

### 3.8 Worldwide interest in Tin Can Mail

Two examples of Karl Lewis hand-painted covers. Each has a similar view of a Niuafou'ou coastal village as viewed from the sea. Both are postmarked for 16th July 1936.



Karl Lewis (1865 - 1942) was an American photographer and watercolour artist. He was a much-travelled sailor, but in 1901 he decided to settle in Japan, and married a Japanese woman Sasako Sadako, and learnt the Japanese language. One of his favourite pastimes was to hand-paint envelopes in watercolour and send them for postage application and mailing to many foreign destinations, Such covers are much sought after and scarce.

### 3.8 Worldwide interest in Tin Can Mail

Walter Quensell corresponded with people in all five continents and Oceania

Africa. Covers to Nairobi Kenya, and Northern Rhodesia - S. Africa

An 18th September 1937 cover to Nairobi, Kenya Colony, that was put into the sea off the Steamer Maunganui on 6th September 1937.



A Registered 1940 cover to N'Kana, Northern Rhodesia put into the sea off the M.V. Matua on 25th September 1940. The stamps have a Niuafo'ou postmark for April 1941, 7 months later.

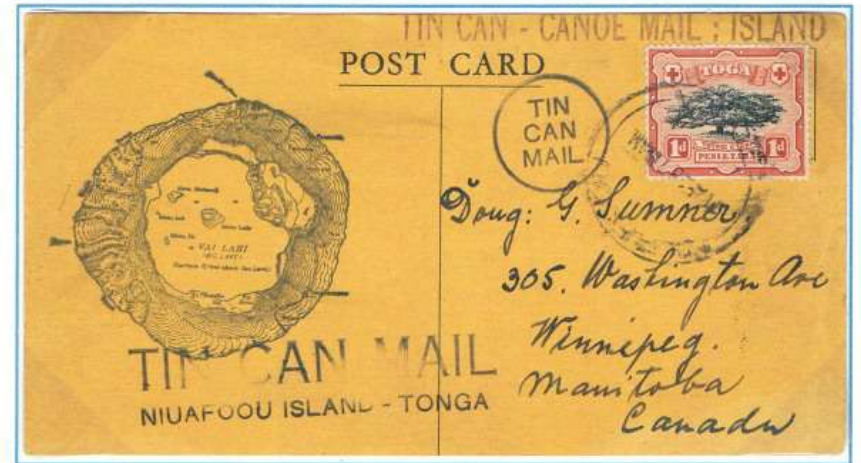


The cover arrived in N. Rhodesia on 11th July 1941

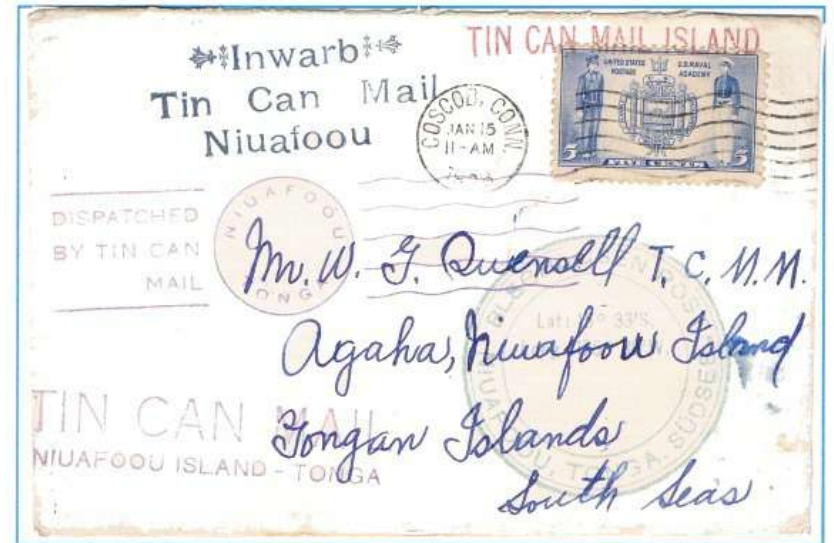
### 3.8 Worldwide interest in Tin Can Mail

Americas. A postcard to Canada and an incoming letter from U.S.A

An 11th August 1938 postcard to Manitoba Canada personally written and addressed by Walter Quensell.



A 15th January 1938 incoming cover from Coscob, Connecticut, U.S.A. addressed to Mr W.G. Quensell T.C.M.M.

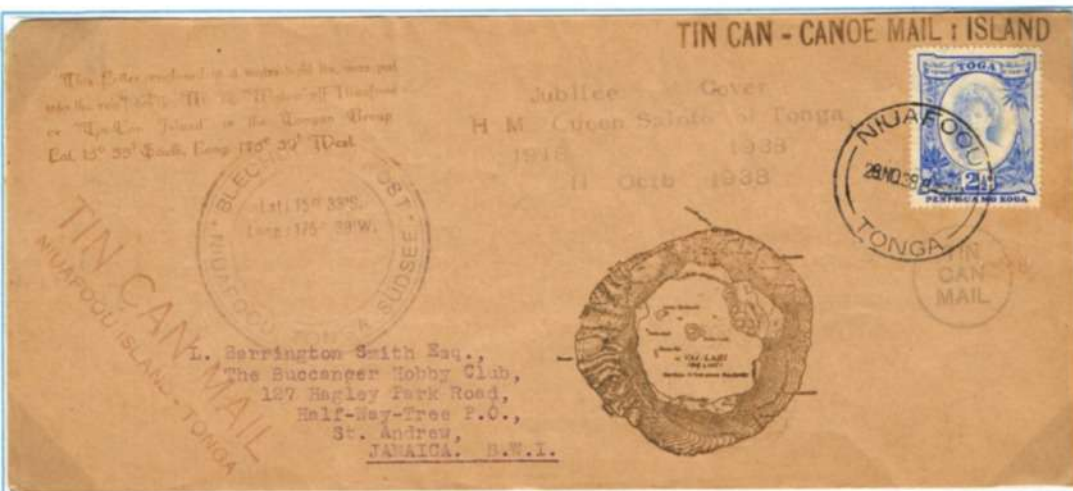


The cover arrived in Niuafo'ou on 14th March 1938

### 3.8 Worldwide interest in Tin Can Mail

#### Americas. Covers to Jamaica, Caribbean and Lima, Peru S. America

A 1938 cover to Half Way Tree P.O., St. Andrew Jamaica, put into the sea off the M.V. Matua. The stamp has a Niuafou'ou postmark for 28th November 1938.



There is a Half Way Tree Jamaica receiving mark on the reverse for 20th February 1939.

A 1938 cover to Lima, Peru, put into the sea off the Steamer Maunganui on 11th August 1938. The stamp has a Niuafou'ou postmark for 26th August 1938.



There is a Lima receiving mark on the front for 6th February 1939, with another for 7th February 1939 on the reverse.

### 3.8 Worldwide interest in Tin Can Mail

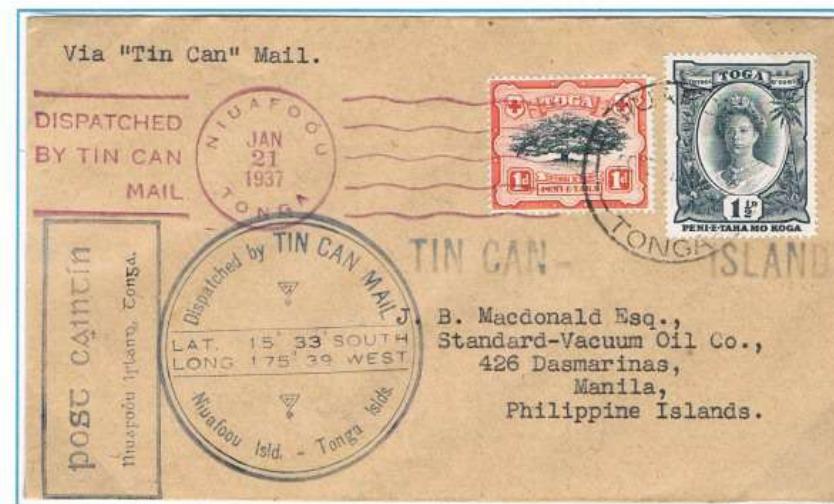
#### Asia. Covers to Calcutta (redirected to Jalapahar) India, and Manila, Philippine Islands

A 5th June 1935 cover to Calcutta, India, redirected to Jalapahar. There is a 3-page letter from Walter Quensell in which he says that he does not hear from India.



There is a Jalapahar receiving mark on the reverse for 9th July 1935.

A 21st January 1937 cover to Manila, Philippine Islands.



### 3.8 Worldwide interest in Tin Can Mail

Asia. The first page of the 3-page letter from W. G. Quensell to India ( see sheet 54)

WALTER GEO. QUENSELL  
3 T.C.M. MAN 3  
NIUAFOOU TONGA

DISPATCHED  
BY TIN CAN  
MAIL

NIUAFOOU  
5 JUN  
1935  
TONGA

Mr. G. J. Gallagher.  
"Port William"  
Calcutta. India.

Dear Sir!

Yours of 7. 2. 35 to hand and I sure  
thank you for same, do not hear often from India.  
Well Sir you want to know about our Packet Mail,  
well this was before my time, and so I can hear  
was only partly successful, often the Mail went  
in diff direction, fell short, or went over the  
Island, it must have been a useless job, at times  
the mail landed half burned and, and if really  
landed those Kanaka used to stow it away for  
days, to make it a matter of more day more dollar.  
Anyhow it was given up, as absolute not satisfac-  
tory. "Tin Can Mail" now as it is called by me is  
quite correct as our mail must be soldered up  
in "Tin Can" to be able to get it on board, as our  
Coast is very rough 10 month out of the year, I started  
"Tin Can Mail" in 1919. first I used only swim-  
mers up to 1930, when a Man eater took one of  
my boys, so I gave that up, but it was the safe-  
stest, as the boys would jump of the Cliff and  
be off through the surf, to the Liner 4 or 5  
mile out, towing or pushing the Tin Can with their

### 3.8 Worldwide interest in Tin Can Mail

Australasia. A Registered cover to Solomons Ford, South Australia

A 6th June 1941 Registered cover to Solomons Ford, South Australia.

On the face of this cover is the violet hand stamp **DAMAGED BY SALT WATER IN TONGA**  
Reference 1. ML - 20 *Rarity DD* and believed to be the only Tin Can Mail cover bearing this cachet



Reference 2

The reverse of the cover (reduced)



The reverse of the cover has the printed words -  
BEWARE OF IMITATIONS

On the reverse are two more violet cachets  
**DAMAGED BY SALT WATER IN TONGA**  
There are also two backstamps for  
G.P.O. SYDNEY N.S.W. AUST 16 JY 41,  
and one for PT. PIRIE STH AUSTRALIA 19 JY 41

### 3.8 Worldwide interest in Tin Can Mail

Australasia. Newspaper wrappers from Australia and New Zealand

Even incoming Newspaper wrappers found their way to Niuafo'ou via Tin Can Mail

A 1937 Pacific Islands Monthly Newspaper wrapper from Sydney, N.S.W., Australia.

The stamp has an indistinct Sydney postmark for 1937 but there is a clear green rubber hand stamp for 21-2-37



Reference 2

A 1937 Newspaper wrapper from Tirau, New Zealand with manuscript 'Newspaper only'  
The stamp has a Tirau postmark for 8th March 1937



### 3.8 Worldwide interest in Tin Can Mail

Australasia. Covers to King Island, Tasmania, and Campbell Town Tasmania

A 16th July 1936 cover to King Island, Tasmania.



There is a Sydney transit mark on the reverse for 23rd July 1936.

An 18th September 1937 cover to Campbell Town, Tasmania put into the sea off the S.S. Maunganui on 6th September 1937.



### 3.8 Worldwide interest in Tin Can Mail

Europe. A cover to Scotland



A letter was enclosed with this cover to Aberdeen in September 1934. They are also accompanied with a 1935 newspaper cutting (that mentions Mr George Hartley) about the Aberdeen Philatelic Society and Tin Can Mail.

The circular date stamp w a space between SEP and 1934 (the day is missing)  
Reference 1. C - 23a  
Rarity D  
Reference 2

#### LETTERS BY "TIN-CAN" MAIL.

#### ABERDEEN PHILATELIC SOCIETY'S TWENTY-FIFTH SESSION.

Founded on October 10, 1910, the Aberdeen and North of Scotland Philatelic Society has now entered upon its twenty-fifth year, and at the first meeting for this session held in the society's rooms, 24 Adelphi, Mr George Beverley, the president, presided over a crowded attendance.

Dr Imper reported as to the position of the exchange packet, which is in a very satisfactory condition, and he was heartily thanked for his services as exchange secretary. Much of the success which has attended the exchange section has been due to Dr Imper's enthusiasm.

Mr Beverley delivered his presidential address, which was illustrated by exhibitions of the stamps of Great Britain, Rhodesia, Canada, India, Chili, Newfoundland, Hawaii, Jamaica and other countries. An interesting "tin-can mail," received by Mr George Hartley, a member of the society, was passed round. This interesting letter was dispatched by tin-can canoe mail from Tonga in September last and reached Aberdeen in perfect condition.

#### Delivered by Natives.

These tin-can mail letters are so-called because they are enclosed in a tin can and taken from an out-of-the-way island, where postal services do not exist or are infrequent. The tins are delivered by natives who swim out to sea and hand the tins over to a ship.

Mr John Fraser, Dr Imper, Dr Watson, and Dr Stephen took part in an interesting discussion, and Dr Howie and Mr Dinnes presented forgeries to the society's forgery collection.

On the call of Mr Hector Monro a vote of thanks was accorded to the president. Sixteen new members were admitted to the society.

Dear Hartley,  
This should be an interesting addition to your collection of antiques if it reaches you all right. I am sending it from Honolulu enclosed in another cover to Niuafuou Island, Tonga Is. Only an occasional mail leaves there at long intervals when a sailing ship stops to trade, though deliveries of mail are more frequent & fairly regular, the letters being sealed in tin cans & thrown overboard from passing liners, which do not stop there & they have no harbour of any sort.  
Best wishes  
J. W. Blackburn.

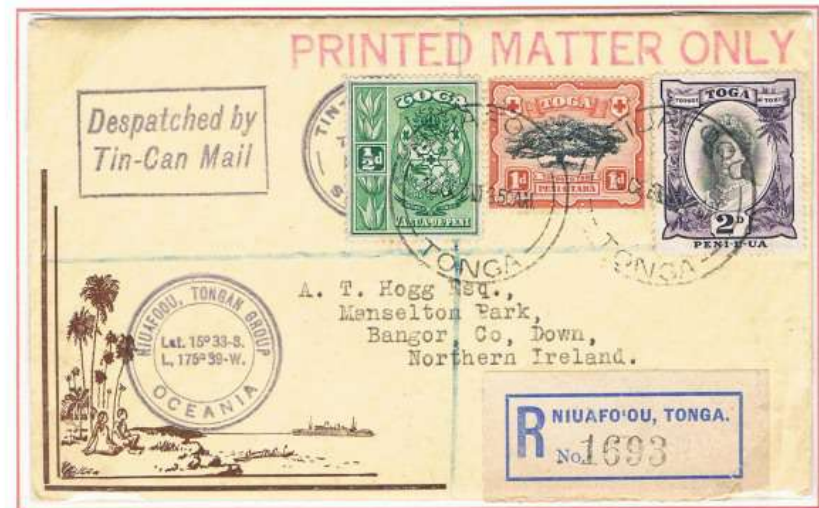
### 3.8 Worldwide interest in Tin Can Mail

Europe. Covers to Orkney and Ireland

This 13th August 1934 cover to Kirkwall in the Orkney Islands off the north coast of Scotland was carried on the S. S. City of Los Angeles second 1934 South Seas Exploration Cruise.



An illustrated and Registered Finau cover to Northern Ireland postmarked for 10th October 19 (? possibly 1939)



This illustrated cover is Reference 1. PC - 5a Rarity D

The cover comes with a notice and price list from the Finau Stamp Service in Nuku'alofa

### 3.8 Worldwide interest in Tin Can Mail

Europe. A cover to Lowestoft, England

A 19th October 1937 Registered cover to Lowestoft, England put into the sea off the S.S. Maunganui on 6th September 1937.



The provisional registered label R. 799 is Reference 1. ML - 13a Rarity DD



The reverse of the cover (reduced)

On the reverse is a Niuafo'ou TIN CAN MAIL OFFICE red hand stamp for OCT 19 1937 and an East Anglian T.P.O Down receiving mark for 29 NOV 37.

The seldom seen, and one of the rarest cachets "SWIMMER MAIL" is Reference 1. ML - 10 Rarity D

### 3.8 Worldwide interest in Tin Can Mail

Europe. Covers to Copenhagen, Denmark and Stockholm, Sweden

A 11th October 1938 cover to Copenhagen, Denmark put into the sea off the S.S. Maunganui on 11th August 1938.



On the reverse is a Charlottenlund receiving mark for the second delivery on 20th January 1939

A 5th June 1935 cover to Stockholm, Sweden put into the sea off the S.S. Monterey. (see sheet 63 for the letter that was enclosed)

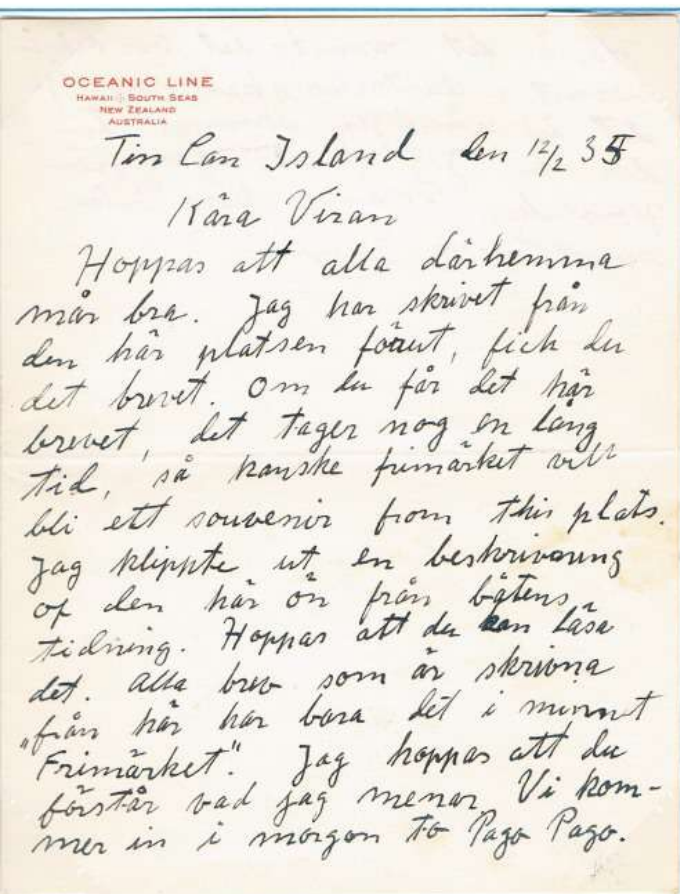


The printed words at the top left of the cover is Reference 1. SM - 8 Rarity DD

### 3.8 Worldwide interest in Tin Can Mail

Europe. Letter enclosed in letter to Sweden

The letter that accompanied the 5th June 1935 cover to Stockholm (see sheet 62)



Tin Can Island the 12th February 1935

Dear Viran

I hope that everyone at home feels good. I have written from this place before. Did you get that letter. If you have got this letter it has probably taken a long time. So maybe the stamp will be a souvenir from this place. I cut out a description of this island from the ship's newspaper. I hope that you can read it. All letters that are written from here have it only in the name of the stamp (??). I hope you understand what I mean. We go to Pago Pago tomorrow.

Here it is warm, it was also warm in Australia. It's summer there now. I will write from Honolulu. Many regards from Gunnar

Här är det varmt, det var också  
varmt i Australia skall jag säga  
det är nämligen sommar-tid  
där nu. Jag skriver igen från  
Honolulu. Många kärre häls-  
ningar från Gunnar

### 3.8 Worldwide interest in Tin Can Mail

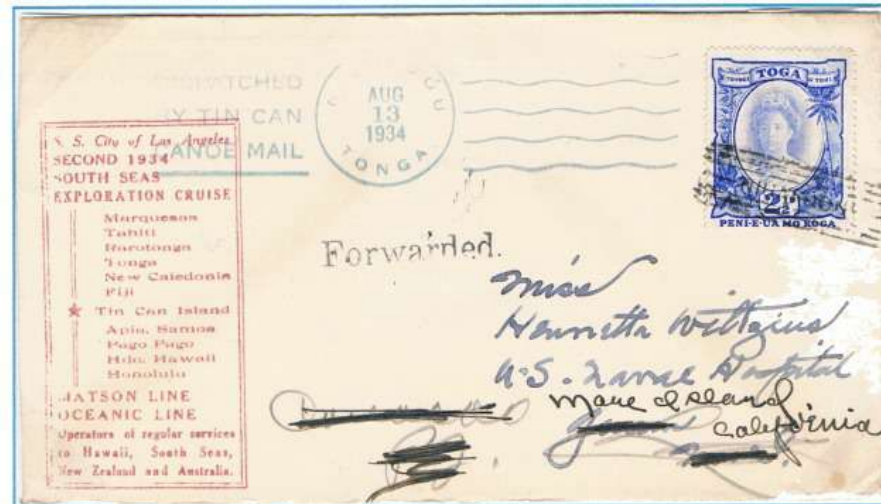
Oceania. Covers to Ocean Island (now known as Banaba) and Guam



This 23rd August 1938 illustrated cover to Ocean Island is addressed to Mr. J.M. Ross who was a trader in the stamps of the Gilbert and Ellice Islands, (Kiribati and Tuvalu). Ocean Island (Banaba) Island is a part of the Republic of Kiribati

On the reverse is a clear General Post Office Ocean Island receiving mark for 29th December 1938

This 13th August 1934 cover to Guam (Pacific Ocean) was carried on the S. S. City of Los Angeles second 1934 South Seas Exploration Cruise. On reaching Guam the cover was forwarded to the U.S. Naval Hospital at Canacao in The Philippines, where it was re-addressed and forwarded to the U.S. Naval Hospital on Mare Island, California



On the reverse are receiving marks for Guam - 2nd October 1934 and U.S. Naval Hospital Canacao 1st December 1934.

It is not when the cover finally arrived at Mare Island.